

A close-up photograph of a person with long, light-colored hair and visible tattoos on their arms, holding a small, white piglet. The piglet is looking up towards the person's chest. The person is wearing a light blue t-shirt. The background is slightly blurred, showing green foliage.

SISU REFUGE

1 Year Activities & Follow Up Report

September 19, 2019

SISUREFUGE.ORG

Sanctuary Outreach Advocacy Rescue

S.O.A.R.

Mission Statement & Goals:

- The mission of Sisu Refuge is to provide permanent sanctuary and lifelong care to abandoned, neglected, abused, and displaced farmed animals. We believe in respect and justice for the most vulnerable within the animal industry and promote compassionate treatment of all creatures.
- Once our organization is well established, Sisu Refuge will serve as an exemplary model for others through effective rescue programs, solid working relationships with other organizations, financial transparency, and strong community involvement.

Highlights:

- Since September 2018, Sisu Refuge has either led the efforts or assisted in the rescue of over 190 individual animals. We currently care for over 75 of these animals here on the sanctuary property.
- Within the last 9 months, we have established working relationships with the Humane Society of the United States as well as Hoke, Guilford, Duplin, Pender, Onslow, and Craven County - all North Carolina Animal Services and Animal Control Departments. We have built supportive and meaningful relationships with nearly a dozen other vegan animal sanctuaries and have worked together with these organizations on multiple levels including joint rescues. Our relationships go beyond the vegan community. These relationships have been built on mutual trust and respect with neighbors, friends, co-workers, and business entities that have provided us with supplies, including, but not limited to: feed, medicine, material, and experienced advice and/or references within the surrounding “farming” community (this is where we are centrally located).
- Sisu Refuge has worked closely with our farm veterinarian to gain valuable knowledge and skill in administering medicine. We have assisted in multiple procedures under professional direction and due to this experience; we estimate that our annual medical expenses can be reduced by nearly 35%. This does not include specialized or critical care. However, it does make a huge difference with new intake procedures such as: vaccines, initial vetting, and recognition when it comes to recording and monitoring medical care.
- We have gradually built an entirely organic, engaged, and supportive audience both online and in person. We have noticed a particularly high engagement during rescues and other emotionally intense scenarios, but overall the audience seems consistent and responsive to our long-term goals. Our monthly donations on Patreon are now at \$799 and this covers 1/3 of our monthly food bill for all residents. We are confident that we will gain sponsors for each pig by mid next year – completely covering the annual feed costs.
- We have been granted 501c3 status as a public charity and donors can now deduct contributions that they make to Sisu Refuge under IRS Section 170. Our EIN # is 84-2536439.
- Our board of directors has been formed and we recently added a new member who is a CPA, to act as treasurer for the sanctuary.
- In the last month: September 2019, we have reached over 900,000 people with our online Facebook posts and doubled our page following as well as added in 20 new monthly supporters!

TABLE OF CONTENTS

Sisu Refuge Activities & Outreach Progress

- **Sanctuary Specifics | Building Stages & Current Residents**

Sisu Refuge has moved to a pristine, 47-acre sanctuary in the middle of eastern North Carolina. We are now a haven for more than 70 rescued individuals who are free to live life on their own terms.

- **Outreach Success | Hosting Events & Vegan Programs**

Sisu Refuge, although newly established, has already hosted over a dozen successful events – some with more than 60 attendees at a time! We strive to provide guests with the chance to meet and interact safely with the animals and meet like-minded individuals to establish networking and friendship. We also use this opportunity to introduce them to plant-based food.

- **Effective Advocacy | Working Partnerships & Building Relationships**

A clear and concise message paired with factual based information makes us highly effective advocate for both human and non-human animal rights. Through focused advocacy we can nurture future relationships with both our online and local community, and work towards common goals with the public as well as other rescuers, sanctuaries, and organizations.

- **Rescue Opportunities | Rescue Statistics & Severe Weather Planning**

We have been in the beginning stages of planning an organized response to severe weather.

Sisu Refuge Campaigns Seeking Funding:

- Pasture Fencing and Acquiring Farming Equipment
- Purchase of a Feed Bin, Small Barn, and Horse Trailer
- Hosting Consistent and Effective Outreach Events
- Fixing Faulty Wiring on Property and Installing a Compost Toilet
- Establishing a Rescue Response Team for Severe Weather

Prospective Future Projects:

- Exploring the possibility of establishing a farmed animal therapy program. We are interested in facilitating a safe and personal experience for those suffering from depression or PTSD, due to wartime or traumatic life experiences. Due to our proximity to multiple military bases and those who experience combat trauma and its emotional effects, we feel as though this is not only beneficial for the animals to receive additional socializing, but also to the people who may find joy in making connections with the animals in our care.
- Planning a CO-OP veganic garden on the property. Such a garden would enable us to harness and teach important skills and foster positive relationships within our community.
- Hiring locals within the community as part-time farmhands. Due to our location, many of our neighbors are employed by corporations such as Smithfield, Sanderson, and various slaughterhouses. We would like to explore hiring such locals part time to assist with the physically demanding tasks required in the daily care of the animals and the property maintenance – and perhaps allow them to see a different side to the animals.



With the generosity of your initial donation, Sisu Refuge was established on a pristine 47-acre property in eastern North Carolina in January 2019. We named the sanctuary “Sisu” based on a Finnish concept of stoic determination, tenacity of purpose, and resoluteness in the face of extreme adversity. We believe this concept defines our mission, and we also see this determination and bravery in the animals that we are able to save. Sisu Refuge is now home to more than 70 permanent residents, each one with a unique story - from escaping factory farming during flooding, to laboratory specimens, natural disaster survivors, severe neglect and abuse rescues, and abandonment.

All the animals here at Sisu live with zero expectations and are allowed to live life entirely on their own terms. We have broken the pig herds into two separate pastures with respect to each social group that has already been formed and plan to fence in an additional two pastures to increase the free roaming space. My husband, who is still active duty in the Marine Corps, dedicates between 25-35 hours each week on top of his military commitments. His acquired skills over the years have reduced and mitigated overage costs of labor while maintaining and repairing the sanctuary outbuildings. We are spending nearly 40-60 hours each week on animal care while also learning to balance consistent social media content and outreach events. We hope to hire a farm hand or additional help before accepting new intakes due to the available time we have and the labor-intensive tasks such as building and repairs.

My husband and I have begun the process of sectioning off usable pasture space and have completed 8 acres of hog proof fencing so far. With nearly an additional 40 acres available to us, we are hoping to finish the remaining fencing this year. The pigs enjoy spending their time relaxing in the woods or relaxing and soaking in two of three large ponds that are on the property. The natural springs, and lush woodland also offers spots for socializing, rooting, seclusion, and napping.



We have dedicated ourselves to helping every animal and person alike that we can while being mindful to not exhaust our current resources. As we learn to manage our expectations within the constraints of time, energy, funding, and space – we have also made every practical effort to stretch each dollar and manage our time wisely. We have utilized salvaged materials, built with reclaimed wood, and repurposed as many items as possible throughout building, repairing and setting up a suitable environment for residents within the sanctuary. We have also completed all the building and fencing ourselves instead of hiring contractors or fencing companies. So, while this has been rather time consuming, it has allowed us to focus each dollar towards improving the quality of life for the animals – never frivolous purchases.





In addition to the 18 Hurricane Florence survivor pigs, we were able to offer permanent sanctuary for a dozen pigs seized during a criminal neglect case in Maryland. The pigs arrived on the 25th of February and on the 26th one of the females; whom we named Mabel, went into labor and delivered 10 perfect babies. We decided to keep the entire family together and after vetting was complete, they were integrated into a herd with their mother. ALL of these pigs would have been killed if the sanctuary was not in place to receive them. Since they were born here on the refuge, they have never known or will know confinement, cruelty, fear, or pain at the hands of humans.



“We aim to create, not only a sanctuary for forgotten animals, but a sanctuary for people as well.”

Some of our newest sanctuary residents include:



Felix On September 1st, right before Hurricane Dorian was expected to pass by the Carolinas, someone found a baby piglet on the side of the road here in Duplin county. While no one witnessed him fall from a truck, the county we live in is one of the most concentrated factory farmed counties in the world and every road here is used for farm transport. After we were tagged in several online threads by our sanctuary name, we contacted animal control and drove to pick him up. Upon arriving, we were astonished at how young he was. Felix has been with us since the 3rd of September and is barely 4 weeks old. We have fully dedicated ourselves to his around the clock care and have seen incredible improvements already! He has built up an incredible “fan” base online and is well loved by hundreds of thousands of people.





Beaux This big, handsome boy was dropped off at a rural animal shelter in Greensboro earlier this month and locals were making threats on his post to adopt him and breed him or eat him - we couldn't let that happen! The shelter did not have appropriate facilities to accommodate him, so after a week of no other placement options available or willing -- we decided to go pick him up! We did not have any plans to take in more pigs, but we couldn't leave him there any longer. He is currently in quarantine and will head to Tennessee soon for neuter and after recovering, Beaux will be integrated into a family herd.

Some more of our newest sanctuary residents include:

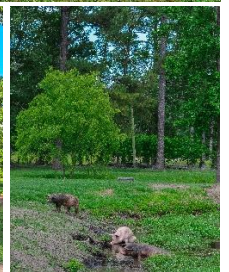
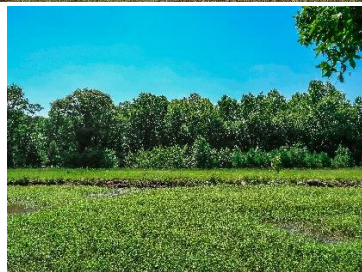


Hank Late at night, on May 30th, we received a call from animal control who was responding to a 900 pound, illegally tagged, breeding boar that had fallen into a septic tank. We drove immediately to the address and loaded him up and brought him to the sanctuary. Hank, named by the owner of the septic system he had fallen through, was nursed back to health and then neutered in Tennessee. After quarantine, he joined the first pasture herd and now spends most of his time “piglet-sitting” Mabel’s babies and napping in the pond. He is a gentle giant whom everyone loves and respects deeply.



Pfeifer & Penelope In June, we were contacted about a piglet being used for medical research in New York. The lab agreed to release her after the trial was complete if she was guaranteed a home at a sanctuary. We felt drawn to her story because the surgery that she was subjected to a surgery that negatively affected my stepfather’s quality of life. After the piglet, named Pfeifer, arrived, we were notified that she had a friend who was left behind from the same lab. Although she had been used in a different study, the two young pigs had formed a very strong bond and the pig who was left behind, later named Penelope, had become extremely depressed without Pfeifer. We made the proper arrangements to bring her here to Sisu Refuge as well and the two were reunited. The physical scars from their previous lives have not completely faded, yet their emotional trauma seems to have passed quickly. These two are so loving, friendly, trusting, and extremely grateful to be alive. They are a constant reminder of how complex and emotional we all are, and how loving bonds help us to heal. Both born in January, they are extremely young, and have been blossoming into the friendliest individuals.







The sanctuary, while still in infancy, has already been a place for community where we have hosted more than a dozen volunteer and outreach events. We focus on providing volunteers and visitors with the chance to meet and interact with the animals in a manner which keeps everyone safe. We use each event tour as an opportunity to discuss animal agriculture and we serve plant-based meals to challenge their preconceived notions about vegan food. With each tour, there are plenty of wonderful opportunities for one-on-one discussion regarding vegan ethics and why we are trying to end all forms of animal use. So far, the response has been very encouraging, and we have had many return visitors express their desire to adopt a compassionate lifestyle. On the following page, I have attached several testimonials from visitors who have made these changes already based on these animals' stories.



“The day you plant the seed is not the day you eat the fruit.”



Aug 23 - Sep 19

Last 28 days ▼



As we come up on one year of rescue, our online outreach and influence has grown phenomenally! Although much of this new audience is due to our two most recent rescues, Felix and Beaux – we feel confident in our ability to maintain an engaged following by posting frequently and engaging in as many one-on-one conversations as possible through Facebook and Instagram comments, messages, and email. We now receive dozens of comments and messages daily from people who have decided to no longer consume animals based on the videos and photos they have seen from our social media posts!

Testimonial



About a year ago I volunteered a few days of my time to help Sisu Refuge who was at the time, just beginning their efforts in saving many farm pigs displaced and abandoned by the recent hurricane. For a while I've been aware of the mistreatment of animals used as food product in types of farms and businesses. I attempted to change only my diet before but that quickly subsided as I realized the extra work it takes to change my life habits. A couple years went by and I implemented some changes in which products I buy but the biggest change in my lifestyle came when I volunteered at Sisu Refuge. Being with the animals, in this case pigs, and seeing the care that Erika, her

husband and other volunteers gave to help these animals had a huge impact on me. It's one thing to know what's going on and be able to ignore or mask the thoughts. It's another to work with the very animals used for food product, physically see their mistreatment and then see others giving up their time to help these animals live a much more deserving life. After many conversations with members of Sisu Refuge and volunteers, I decided to make a greater change in my life and live a vegan lifestyle. Since that decision much of the guilt I repressed had gone away. I'm still in constant communication with Erika and her husband and plan to volunteer more time at the refuge even though it is a couple hours from where I live. They are making a huge impact in more than just the animal's lives by saving animals from cruel mistreatment. They're positively impacting human's lives as well. – *Royce Williams*

My Best Lifestyle Change

It all started in Texas, where I grew up and was stuffed with whatever food my parents could afford. There were those biker rallies, parties and barbecues, where meat was on the menu. My father would fabricate many smokers in his time and my mother would be the best at cooking brisket. To this day, she still serves the public and clubs for special events. Throughout my adolescent years, I was active and participated in many sports, so my mother fed me the usual Western diet. Once I moved on my own, I became determined with a new fitness goal and started to prep food such as chicken, potatoes, eggs and consumed whole milk almost every day. I became determined to increase my knowledge about physical fitness, however I did not take into consideration the types of diets until I turned 29 years old.

At this point of my life, I tried intermittent fasting and had an increase of mental health which provided me with improvements to focus on work in the office, goals and my daily routines. A couple years past and I gave the Ketogenic Diet a chance. I was in the best physique I had ever been, down to 4.7 percent while consuming eggs, tuna, cheese sticks, and sirloin steaks daily for almost 2 years. From 2017 to the beginning of 2019, I would go out to buffets and various restaurants to consume for example about 50 chicken wings on average in one sitting.

And then I found Sisu Refuge. Surprisingly, Joseph and Erika Purrington had requested volunteers through the Camp Lejeune Single Marine Program (SMP) website in Jacksonville, North Carolina, in order to assist and experience the farm. I was an Active Duty representative from my command and had many Marines willing to take the opportunity to spend time at Sisu Refuge. Not only one time, but another month later in the spring of 2019, I visited this great place to experience and hear the stories of how life was for these animals before they became rescued. I still remember to this day, that I scarfed down that mozzarella cheese stick before getting off of the SMP coach/bus, only to be surprised with a Vegan feast. Not only the feast was fulfilling to my stomach but it was an awakening to a realization to what I have been consuming all this time.

I started to attend church again, getting saved was amazing and my faith has been building ever since. About a year ago, I had tried vegetarian for a month and the Vegan diet for one week, but had no luck. Unlike my past, I have been praying so much more and I'm more willing to follow in Jesus' footsteps, so I believe that faith has given me the will to save animals. They call this Veganism and I am so thankful to Sisu Refuge and sharing the experiences to everyone that visit the farm. For the first time, I have benefitted in mental, physical and spiritual gain during this great new lifestyle. In this day and time, there is an increase of agriculture and many negative things strive in the modern environment, however there is no better place where I'd rather be than worshipping our Lord and Savior while being a Vegan.

Go ahead and read a book by its cover; I drive a big truck, ride a Harley Davidson, born and bred in Texas, been in a military organization with majority of men for over a decade and I go to the gym to lift weights. Almost every time I am in public and someone stops me for fitness advice, I say "diet". If they want to know more, then it's all Vegan! Someday soon, I will advertise those gym shirts to support Veganism. Sisu Refuge has changed my life for good and I am proud to be Vegan.

Thank you,

Kyle Rosenbaum



Rescue



Sanctuary Outreach Advocacy Rescue



Sisu Refuge all started back when we first answered calls for help during Hurricane Florence, and we have been responding to those calls ever since. Nearly every single day - we receive multiple calls, emails, and messages asking for assistance with the rescue or placement of different animals and unfortunately, due to our current resources, we have had to start saying “no” more often. Our primary focus and responsibility is to the animals that are already in our care and we must provide the absolute best care possible to them first. We ask for help to get the refuge in a better position to help more animals soon and this is only possible with a strong infrastructure, funding and effective programs in place.

Our time has been rightfully consumed with the daily animal care and maintenance of the sanctuary; however, we are also still receiving desperate pleas to assist with large scale rescues, including hoarding situations, and natural disasters, that of which took place in the Midwest USA earlier this year. The direst hoarding situation that we could possibly help with is currently taking place in Oregon where several sanctuaries have taken the lead on a massive hoarding/neglect case with 250 pigs -- currently over 80 of these commercial farmed pigs are still in need of sanctuary placement. As winter approaches the Pacific Northwest, we anticipate that we will be asked to take at least a dozen of these pigs and we would truly like to help as the need grows greater and placement options become less available. We have included an additional request for the opportunity to assist these animals at the end of this report. For now, because Oregon is so far away, and everything is being managed through highly competent rescues, we are setting our sights on being prepared for the next scenario that requires this amount of response here on the East Coast.

“By failing to prepare, you are preparing to fail.”



We have established supportive relationships with several small sanctuaries and independent rescuers here in North Carolina and neighboring states. We believe that we are in a wonderful position to be able to act not only as an effective, safe, and responsible rescue operation, but also as a secure staging location for animals that are rescued during these events.

Joseph, our project manager and director, is currently active duty and his military service and experience with leading people is a huge advantage in guaranteeing safe and effective operations during moments of stress. We have begun putting together a preparation and response plan (referred to as an OSMEAC) focused on rescue and response when the situation arises. Although we would face issues with lining up and guaranteeing placement, we are confident that we can put together a capable team to respond, document, assist, and rescue.

The **OSMEAC** is broken into 6 parts as follows and can be adjusted to fit multiple scenarios:

Orientation: covers where our location is regarding the situation, where the staging and meeting location will be, the travel distance and team members required in order to assist safely, means of transportation, and necessary reconnaissance of the areas. Everyone needs to be well oriented in order to maximize success.

Situation: covers the scenario to which we are responding (i.e. flooding) and what types of animals are in need of assistance. We must also account for weather and road conditions that may impede the operation plan and adjust accordingly -- preparation is key with dangerous events.

Mission: covers our main purpose for being there and what we are aiming to accomplish by responding. *Are we there to document, rescue, assist, transport?* All these things must be known and agreed on prior to rushing in.

Execution: covers how we are going to accomplish the mission -- what we are going to do once we arrive and how we are going to carry it out. Each person understanding their role and how they are expected to carry it out is vital to everyone's safety and effectiveness.

Admin & Logistics: one of the most important aspects of the plan is the administrative group staying organized and involved in a team's movements. This section also includes confirmed placement options and any follow up support. *Are there other sanctuaries willing and able to assist in support of our efforts, by means of equipment, manpower, transport, etc.?* We must know these answers prior to reacting in situations.

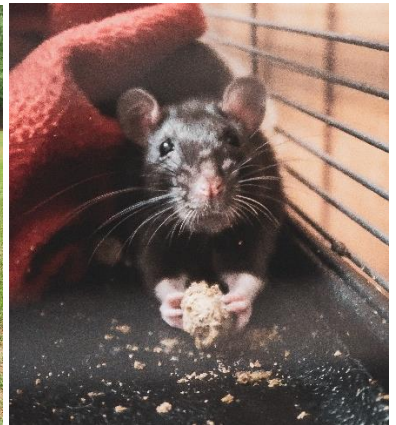
Command & Signal: this covers who is in charge and what our primary means of communication will be. This includes establishing a set "home base" of operations in one locale so that everyone knows who to contact and where to go. *If the primary means of communication is lost, what is our backup or alternate form or contact?*



Some of our most recent small scale rescues and rescue partnerships include:



“Discard” Newborn Dairy Calves Through partnering with a vegan activist in Vermont, we were able to offer temporary refuge to two sets of newborn dairy calves. We acted as a halfway point for other sanctuaries and handled the fundraising, vetting, and transportation necessary to get these babies to their new homes!



“Leftover” Lab Rats We were able to rescue six “backup” lab rats from a research facility up north. These rats were set to be destroyed once the research was concluded. We got them released and networked volunteer transport from NY to NC. We successfully adopted out all six to two different vegan homes here in the state!



Blind Kitten & Code Red Shelter Kittens By partnering with another sanctuary in Wilmington, we were able to assist a local shelter during kitten season and pulled a dozen kittens from their code red euthanasia list. Several of these kittens now call Sisu Refuge home also.

Funding Requested:

While we do expect to be able to increase our committed monthly donors, we humbly request funding assistance in **one** of the following areas. ***Our current monthly Patreon is at \$1068.00***

Sponsoring Our Annual Feed Budget – \$20,000

Our current monthly feed bill for all 70+ animals is approximately \$2,000-\$3,000, depending on the prices of seasonal produce. We are confident that our monthly Patreon donors will increase to \$2,000 by next spring, which would help to greatly offset these costs. We are also currently looking into a fodder system for winter.

Fencing in an additional 12 acres of pasture - \$13,500

By fencing in approximately 7,200 feet -- we can provide an additional 12 acres of secure pasture for the pigs. Through alternating wooden and metal t-posts every 8-feet, using 4ft woven-wire fencing, cement, and volunteer labor we will be able to cut the initial quote we received in half. (*Appraisal and fencing plans attached.*)

Large Equipment Payments For 1 Year - \$6,000

We have taken out two personal loans for equipment that we deemed necessary for the refuge: a UTV vehicle and a tractor with a bucket, bush hog, and backhoe. The tractor has allowed us to move downed trees, clear and dig ditches, move hay, supplies, and building materials with ease. We have already leveled several areas, fixed large holes that impede our daily tasks, and begun diverting rainwater away from outbuildings. The UTV saves us both time and energy by allowing us to get to different areas of the property with ease. (*Both invoices attached.*)

Purchasing a used bulk feed bin hopper and moving it to property - \$3,000

We are currently buying our pig feed from a local mill and spend roughly \$9 per 50-pound bag. We purchase 40 bags, or one ton, of food each week - resulting in 160 unrecyclable bags each month. We now purchase enough food that we could justify ordering through delivery and filling a hopper. This will help us save our time and donor money, reduce wear and tear on our personal vehicle which we use for pickup and it would also eliminate additional waste from the bags that cannot be recycled.

Remodel a side garage to serve as a small volunteer hub and install a compost toilet - \$3,500

Each time we have hosted events for large groups, we have had to rent a porta-potty at roughly \$180 per day. We would to explore the possibility of having a compost toilet permanently set up for visitors and providing a small area for volunteers to relax

Establishing an “Emergency Evacuation Fund” for Sisu Refuge - \$5,000

In the event of a severe weather situation that calls for a mandatory evacuation of Duplin county, we would need to relocate all 70+ animals to a safe location. While we do have one trailer currently, we may need to rent equipment or hire transporters in order to move them quickly. We would also need to locate a secure and appropriate staging point for rent or lease to temporarily house all the animals.

Digging a well on the back half of the property - \$4,500

Towards the back of the 47 acres, there is a perfect location for a well to be dug, which would provide up to four additional pastures with water. Although these pastures are not entirely completed – it would be ideal to avoid hauling water back into this location!

Purchasing an additional horse trailer for transports and vetting appointments - \$4,000

Get 40 tons of recycled crushed concrete and gravel delivered for chute repair - \$1,000

Purchasing an additional sleeping area/barn for finished back pasture - \$4,500

Additional Requests:

Consideration for potentially helping pigs located in Pacific Northwest - \$10,000

A dozen or so pigs being transported here to NC would require an additional shelter, vetting, feed, and fencing.

Attachments Included: Fencing estimate, tractor and UTV monthly bills







**POWERSPORTS CONSUMER INSTALLMENT CONTRACT
UTAH LOAN CONTRACT AND SECURITY AGREEMENT CONSUMER NOTE
THE TERMS OF THIS CONTRACT ARE ON MULTIPLE PAGES**

(Please Print)

Borrower Name(s) JOSEPH PURINGTON

Address 4004 N NC 903 HWY

City ALBERTSON State NC Zip Code 28508

Co-Borrower Name(s) _____

In this contract, "you" or "your" means all persons who sign this contract as borrower or co-borrower, jointly and severally, and "we," "us," "our," "SYNCRB" or "Lender" means Synchrony Bank, each of its successors, and each assignee or holder of this Note.

1. PURCHASE MONEY LOAN AND SECURITY INTEREST: This loan is made to finance the purchase of the unit, parts and accessories (collectively, "Unit") described in Section 3. You agree that the terms of this contract are shown on multiple pages of this contract and that the data and the numerical amounts shown below accurately reflect the details of your purchase and our contract. You hereby grant us a purchase money security interest in the Unit to secure all unpaid amounts under this contract until all such amounts are paid in full.

You promise to pay us the Amount Financed shown in Section 5 below, along with simple interest at the contract rate shown ("**Contract Rate**") and all other charges provided for under this contract, in accordance with the Payment Schedule shown in that Section from today's date until paid in full. The Loan maturity date is 04/24/2026. The amount shown in Section 5 as the Total of Payments is based on the assumption that all payments will be made on their scheduled due dates. The actual amount you pay may be more or less, depending on your payment habits. For example, your actual total payments will be less if we consistently receive your payments before the due date. Likewise, your actual total payments will be more if we consistently receive your payments late. The final payment due under this contract will be for all remaining amounts, including principal, interest and other accrued charges outstanding and unpaid.

2. ASSIGNMENT: We may assign your account and our rights under this contract to another financial institution or company without prior notice to you. That person will take our place under this contract. You may not assign any of your obligations under this contract without our express written agreement.

3. DESCRIPTION OF UNIT PURCHASED:

New	Used	Year	Make	Model	Unit Identification No.
X		2019	KAWASAKI	KAF400RKF	JK1AFER17KB501125

4. ITEMIZATION OF AMOUNT FINANCED:

1. Amount Paid to Others on Your Behalf

- A. To LEJEUNE MOTORSPORTS**
(insert dealer name)
- 1. For Unit \$ 7,818.63
 - 2. Freight & Set Up \$ 1,222.63
 - 3. Accessories \$ 0.00
 - 4. Dealer Document Preparation Fee \$ 199.00
 - 5. Less Down Payment /
Trade-In Amount (\$ 2,000.00)
 - 6. Sales Tax \$ 632.89
 - 7. To _____ for
(Optional Extended Service Plan*) \$ _____
 - 8. To _____ for
(Optional GAP Protection*) \$ _____
 - 9. To _____ for
(Optional Tire Guard Protection*) \$ _____
 - 10. To RIDERS ADVANTAGE for
(Optional Warranty*) \$ 983.00

**Dealer may be retaining a portion of this amount.*

B. To public officials:

- 1. Title Fees \$ _____
- 2. License Fees \$ _____
- 3. Registration Fee \$ _____
- 4. Lien Notation Fees \$ _____
- 5. Filing Fees \$ _____
- 6. DOC Stamp Fees \$ _____

C. To _____
for _____ \$ _____
To _____
for _____ \$ _____

Subtotal: \$ 8,856.15

2. To Lender (prepaid fees)

- 1. Origination Fees \$ _____
 - 2. _____ \$ _____
- Subtotal: \$ 0.00**

3. Total Loan Amount (Subtotals 1+2) \$ 8,856.15

4. Less Prepaid Finance Charge(s) (\$ 0.00)

5. Amount Financed (3-4) \$ 8,856.15

Finance LLC
INSTALLMENT CONTRACT AND SECURITY AGREEMENT (Consumer Use) Commitment No. T072810

Finance LLC ("Assignee") 8001 Birchwood Court, P.O. Box 2000, Johnston, IA 50131		S DEALER CODE	010961.G900
B CONTRACT NUMBER		E CONTRACT DATE	08/01/19
U NAME	JOSEPH R PURINGTON	L NAME	SMITH'S OIL LLC
E ADDRESS	4004 N NC 903 HWY	L ADDRESS	9269 DUNN ROAD
R CITY & STATE	ALBERTSON NC	E CITY, STATE	
R ZIP CODE	28508	R ZIP CODE	SALEMBURG NC 28385
	TELEPHONE NO. (985)788-0296		
	EMAIL ADDRESS		

PAYMENT SCHEDULE - EQUAL MONTHLY PAYMENTS:			IRREGULAR PAYMENTS TO:	MAKE PAYMENTS TO:
Number of Payments	Amount of Each Payment \$	When Payments are Due	Irregular instalments are due as follows: N/A	DLL Finance LLC P.O. Box 14535 Des Moines, IA 50306
84	391.78	1st of each month, beginning 09/01/19		

DESCRIPTION OF PURCHASED MACHINERY / COLLATERAL: Note: Machinery described below as "New" does not necessarily mean the Machinery was manufactured in the current year.

NEW/USED	MAKE AND MODEL NUMBER	SERIAL NUMBER	DESCRIBE PROPERTY PURCHASED	CASH PRICE \$
N	LS TRACTOR XG3135	2286004422	TRACTOR	15,198.00
N	LS TRACTOR LL3301	1812B0067	LOADER	3,300.00
N	LS TRACTOR LB1100	190401377	BACKHOE LB1100	4,998.00
SEE ADDENDUM				

DESCRIPTION OF TRADE-IN MACHINERY: Except as otherwise disclosed below, Buyer represents and warrants that trade-in property is free and clear of all security agreements, liens and encumbrances.

MAKE AND MODEL NUMBER	SERIAL NUMBER	TRADE-IN ALLOWANCE	LESS OWING	NET TRADE-IN
N/A	N/A	N/A	N/A	N/A

ANALYSIS OF SALE		
Cash Price	1.	24,563.00
Sales Taxes	2.	.00
Total Cash Price (1+2)	3.	24,563.00
Cash Down Payment	4.	.00
Net Trade-In	5.	.00
Total Down Payment (4+5)	6.	.00
Unpaid Balance of Cash Price (Principal) (3-6)	7.	24,563.00
Other Charges:		
a. Physical Damage Insurance	8.	1,733.17
b. Filing Fees	9.	76.00
c. Other (describe) N/A	10.	.00
Total Other Charges (8+9+10)	11.	1,809.17
Prepaid Finance Charge	12.	150.00
Amount Financed (Basic Time Price) (7+11)	13.	26,372.17
FINANCE CHARGE (Time-Price Differential)	14.	6,537.35
Total of Payments (Time-Price Balance) (13+14)	15.	32,909.52
Total Sale Price (3+11+14)	16.	32,909.52
ANNUAL PERCENTAGE RATE	17.	6.510 %

Insurance. By signing below, Buyer does or does not elect to obtain physical damage insurance for the Machinery through a group policy arranged by Assignee. By signing directly below, Buyer acknowledges having read the accompanying Customer Agreement to Provide Physical Damage Insurance, Buyer understands the terms contained therein and represents that information contained therein related to Buyer is true and correct. *Note: Your signature is also required following the "Notice to Buyer" section to show your agreement to the terms of the Contract.*

Buyer's Signature: _____

**** NOTICES TO BUYER ****
DO NOT SIGN THIS CONTRACT BEFORE YOU READ IT OR IF IT CONTAINS ANY BLANK SPACES. YOU ARE ENTITLED TO A COPY OF THE CONTRACT YOU SIGN.

For additional terms, conditions and disclosures that are included in this agreement, please see the pages that follow and "Truth-in-Lending Act Disclosures."

Pursuant to the terms of this contract (this "Contract"), the undersigned Buyer (if more than one, jointly and severally), hereby purchases the property described above (the "Machinery") from the undersigned Seller for the Total Sale Price indicated in the Analysis of Sale, subject to the terms and conditions hereunder and on the pages that follow and promises to make the Total of Payments as set forth above.

Assignment. Following assignment of this Contract, all references to "Seller" in this Contract shall be deemed references to "Assignee." Buyer acknowledges that Seller is not the agent of Assignee, that any representations or warranties made by Seller are not binding on Assignee, and that Seller does not have the authority to modify any term or provision of this Contract subsequent to assignment of this Contract.

By signing below, Buyer acknowledges that he/she has read and received a filled-in copy of this Contract, Assignee's Privacy Notice and the Truth-in-Lending Act Disclosures and understands all terms.

BUYER	Buyer's Name: JOSEPH R PURINGTON	SELLER	Seller's Name: SMITH'S OIL LLC		
	Signature		Signature		
	Print Name		Date	Print Name	Title

Thank You!

